

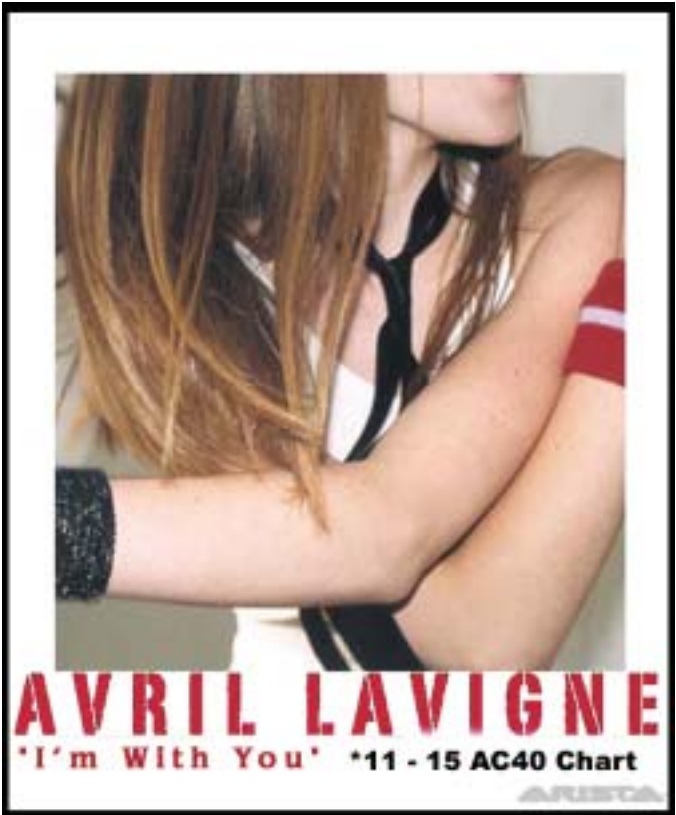
LW	TW	ARTIST	SINGLE	LABEL	TWS	TRND	LWS	3WS	STN	ADD
1	1	<b>SANTANA w/MICHELLE BRANCH</b> — The Game Of Love (Arista) <b>No. 1</b>			1651	+143	1508	1440	62	
4	2	<b>JOHN MAYER</b> — Your Body Is A Wonderland (Columbia) <b>+</b>			1062	+134	928	943	41	
2	3	PHIL COLLINS — Can't Stop Loving You (Atlantic)			1049	-1	1050	1041	50	1
3	4	UNCLE KRACKER — In A Little While (Lava/Atlantic)			1024	+70	954	1027	37	
6	5	<b>DIXIE CHICKS</b> — Landslide (Monument) <b>+</b>			952	+139	813	717	36	1
5	6	FAITH HILL — Cry (WB)			908	+59	849	925	39	
7	7	<b>MATCHBOX 20</b> — Disease (Lava/Atlantic)			881	+102	779	764	30	
8	8	<b>ART GARFUNKLE</b> — Bounce (Manhattan)			794	+31	763	725	35	
11	9	<b>CHRISTINA AGUILERA</b> — Beautiful (RCA) <b>+</b>			783	+106	677	493	44	1
9	10	<b>JEFFERSON THOMAS</b> — Grand Central Station (Evanworks) <b>+</b>			752	+18	734	708	38	
15	11	<b>AVRIL LAVIGNE</b> — I'm With You (Arista) <b>+</b>			746	+149	597	455	38	2
10	12	<b>TAMARA WALKER</b> — If Only (Curb)			721	+10	711	710	32	1
12	13	VONDA SHEPARD — Rainy Days (Jacket)			659	+3	656	612	33	
14	14	<b>B.K. DIAZ</b> — Alexa Marie (BKDR) <b>+</b>			647	+18	629	561	32	
13	15	SHANIA TWAIN — I'm Gonna Getcha Good (Mercury)			639	-13	652	658	34	
18	16	<b>JOHN RZEZNIK</b> — I'm Still Here (Hollywood)			605	+65	540	527	26	
21	17	NO DOUBT — Underneath It All (Interscope)			604	+111	493	543	22	
17	18	<b>MIKE DUNCAN</b> — Syndee Loo (Tony Records) <b>+</b>			592	+46	546	459	32	2
20	19	<b>NORAH JONES</b> — Don't Know Why (Blue Note/Virgin)			561	+50	511	500	28	
16	20	MELISSA ETHERIDGE — The Weakness In Me (Island)			559	+9	550	632	27	
19	21	<b>JEFF LIBERMAN</b> — Tell Me You Love Me (JSL) <b>+</b>			547	+18	529	498	28	
22	22	<b>BRANT MILLER</b> — World Without Guns (Stardust) <b>+</b>			508	+29	479	477	17	
25	23	<b>SHANE MINOR</b> — Don't Ask Why (TME)			429	+58	371	325	27	3
26	24	<b>GENEROUS JUICE</b> — Regular Joe (High School) <b>+</b>			428	+62	366	316	22	2
28	25	<b>DAVE MATTHEW'S BAND</b> — Grey Street (RCA) <b>+</b>			415	+80	335	307	20	1
24	26	MARIAH CAREY — Through The Rain (Island/Def Jam)			401	+8	393	358	22	
27	27	<b>PAUL SIMON</b> — Father & Daughter (WB) <b>+</b>			386	+22	364	321	21	
29	28	<b>ROD STEWART</b> — These Foolish Things (J) <b>+</b>			361	+29	332	281	22	2
32	29	<b>3 DOORS DOWN</b> — When I'm Gone (Universal)			346	+79	267	213	14	1
35	30	<b>JAIMIE LEE</b> — Dance With Me (Ripe) <b>+</b>			307	+81	226	213	13	2
34	31	<b>COUNTING CROWS</b> — Big Yellow Taxi (Geffen)			295	+44	251	196	16	1
33	32	<b>RYAN MONTANA</b> — Use Me (Sota) <b>+</b>			293	+30	263	180	22	2
30	33	MADONNA — Die Another Day (Maverick/WB)			292	-10	302	338	11	
31	34	<b>HALL &amp; OATES</b> — Forever For You (BMG)			286	+10	276	269	18	
37	35	<b>JOAN OSBORNE</b> — I'll Be Around (Compendia) <b>+</b>			254	+47	207	54	28	6
36	36	<b>GEORGE HARRISON</b> — Stuck Inside A Cloud (Capitol)			238	+14	224	197	17	
38	37	<b>STEREOFUSE</b> — Everything (Wind Up)			225	+20	205	205	10	
39	38	<b>BON JOVI</b> — Misunderstood (Island/Def Jam) <b>+</b>			212	+27	185	126	15	2
--	39	<b>COLDPLAY</b> — Clocks (Capitol) <b>+</b>			185	NEW	122	102	11	
--	40	<b>SHEER BLISS</b> — Picture Perfect Dream (Speed Of Light) <b>+</b>			167	NEW	85		17	7

C	H	A	R	T	B	O	U	N	D
Uncle Kracker w/Dobie Gray	—	Drift Away (Lava/Atlantic)	<b>+</b>	166	+52	13	4		
Stacia	—	Angel (Raystone)	<b>+</b>	160	+56	20	9		
Celine Dion	—	At Last (Epic)	<b>+</b>	159	+44	13	1		
Jack Johnson	—	Bubble Toes (Universal)		156	+15	8			
Von Ray	—	Inside Out (Elektra/EEG)	<b>+</b>	142	+30	11	2		

LW: Last weeks chart position TW: This weeks chart position TWS: This weeks total spin count during current airplay week TRND: Increase or decrease in number of spins from previous airplay week LWS: Last weeks total spin count during previous airplay week 3WS: Total spin count from previous third week STN: Number of stations reporting the single ADDS: Number of new stations reporting the single Stress Trax (+): Tracks noted by radio stations as having the strongest listener reaction Prime Movers: A compilation of spin increases and chart movement

**HOT DEBUT**  
**Taylor Barton**  
**"Not The Kind You Keep"**  
**(Green Mirror)**

**HIDDEN SECRET**  
**Charlotte Church**  
**"Would I Know"**  
**(Columbia)**





## Inside A/C by: Larry Weir

Sheer Bliss continues to pound out another real strong week with their "Picture Perfect Dream" (Speed Of Light). This incredibly talented duo from the Portland area (Oregon) is on fire as of late and is in its second week of a strong showing. They also didn't do too bad as far as the New Music Weekly nominations went by picking up a nod for "Best Group/Duo and for their "See You In

The Clouds" (Speed of Light) which hit #1 on the AC40 chart towards the later part of 2002. Also striking "gold" in the awards nominee process was Nita Whitaker for her amazing performance on "Heaven Holds The Ones I Love" (LLM) which also spent a record number of weeks on our AC40 chart. The song which is still receiving major airplay on the R&R charts and is now a top recurrent on most of our stations and has really opened the door for this truly gifted vocalist. Along with the large number of votes that she received from our programmers, Nita was solidly included on the nomination list for "AC Female Artist Of The Year" along side Vanessa Carlton, Kelly Clarkson, LeAnn Rimes and Norah Jones. The male artist category is a solid one as well with John Mayer, Josh Groban, Bruce Springsteen, Jack Russell & Michael Damian all in the running. In the coming weeks we will be running some blurbs about the nominees for our PD, MD and stations of the year. And we can start by sending out a few kudos to music director Eric St. John and program director Steve Kelly for putting WJER/FM in the top station category for "AC Station Of The Year". Both of these gentlemen have made a lot of friends out there with new artists and with industry promotion people that had a lot to do with the number of votes that helped them beat out a number of larger market stations. "We're really excited about this nomination and it will help the other departments at our station realize that we actually do something in the programming room", said a very jubilant Eric St. John. We congratulate all of our nominees and we will announce the finals on March 15.

### A/C Up & Coming

ARTIST	SINGLE	LABEL	TWS	TRND	STNS	ADDS
The Calling	— For You (RCA)		90	+9	5	1
Taylor Barton	— Not The Kind You Keep (Green Mirror) †		90	NEW	11	11
Santana w/Musiq	— Nothing At All (Arista)		85	+14	7	1
Nick Carter	— Do I Have To Cry For You? (Jive)		85	0	4	
Red Hot Chili Peppers	— Can't Stop (WB)		81	+15	3	
Lucy Woodward	— Dumb Girls (Atlantic) †		79	+44	7	2
Duncan Sheik	— Half Life (Atlantic) †		79	+28	5	
Susan Tedeschi	— Alone (Tone-Cool)		77	+11	4	1
Norah Jones	— Come Away With Me (Blue Note/Virgin)		76	+5	6	
Dropline	— Best Thing (Reprise) †		73	+17	2	
Sixpence None The Richer	— Don't Dream...(Squint/Columbia)		70	+24	8	3
Sister Hazel	— Your Mistake (Sixthman) †		64	NEW	4	2
Barbara Streisand w/B. Manilow	— I Won't Be...(Columbia) †		64	+10	4	
Keith Urban	— Somebody Like You (Capitol) †		58	+16	5	1
No Doubt	— Running (Interscope)		58	0	2	
David Gray	— Be Mine (RCA) †		54	NEW	5	4
Saliva	— Always (Island)		54	0	2	
Celine Dion	— I Drove All Night (Epic) †		53	+27	6	3
The Strokes	— Someday (RCA)		51	0	2	
Ben Green	— Without You (Artemis)		45	NEW	5	3
Craig David	— Hidden Agenda (Atlantic) †		45	NEW	2	1
Beck	— Lost Cause (DGC)		43	0	2	
Shakira	— The One (Epic) †		38	+4	3	
Soluna	— Monday Mi Amore (DreamWorks)		37	+9	2	1
Nivea	— Don't Mess With My Man (Jive)		35	0	1	
Kelly Rowland	— Can't Nobody (Columbia)		35	0	1	
Jimmy Eat World	— A Praise Chorus (DreamWorks)		33	0	1	
J.C. Chasez w/N'Sync	— Blowin' Me Up (Jive)		31	0	2	
Josh Groban	— You're Still You (Reprise) †		29	+7	4	1
Jennifer Lopez w/L.L. Cool J	— All I Have (Epic)		26	0	2	

**DROPS:** Chris Emerson "All Because Of You", LeAnn Rimes "Tic Toc", Dixie Chicks "I Believe In Love", Splendor "The Loneliest Person..", Whitney Houston "One Of Those Days"

**Celine Dion**

**I Drove All Night**

**TOP40 UP & COMING CHART**  
**AC40 UP & COMING CHART**  
**#6 MOST ADDED AT CHR**  
**#11 MOST ADDED AT A/C**  
**NMW STRESS TRAX**  
**NMW PRIME MOVER**